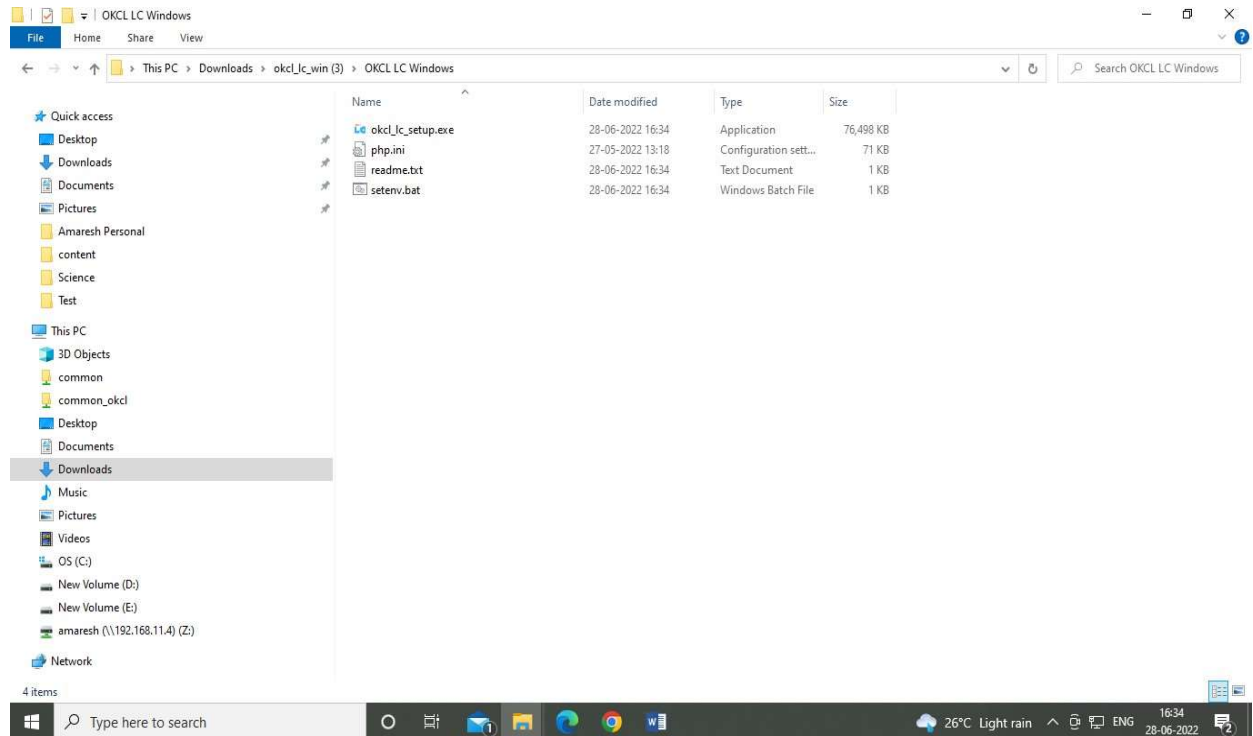


Step – 1 OKCL LC WIN INSTALLATION GUIDE

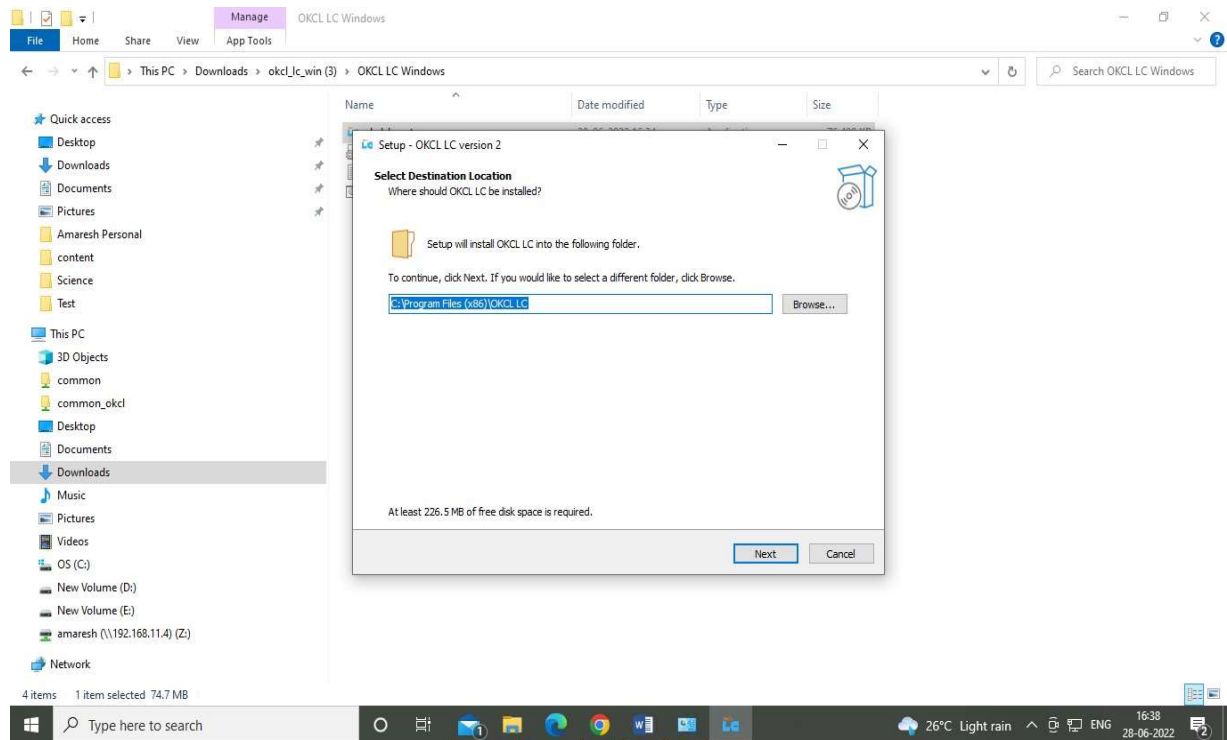
Step – 2 INSTALLATION GUIDE FOR UPDATE

Procedure for Step -1 OKCL LC WIN INSTALLATION GUIDE

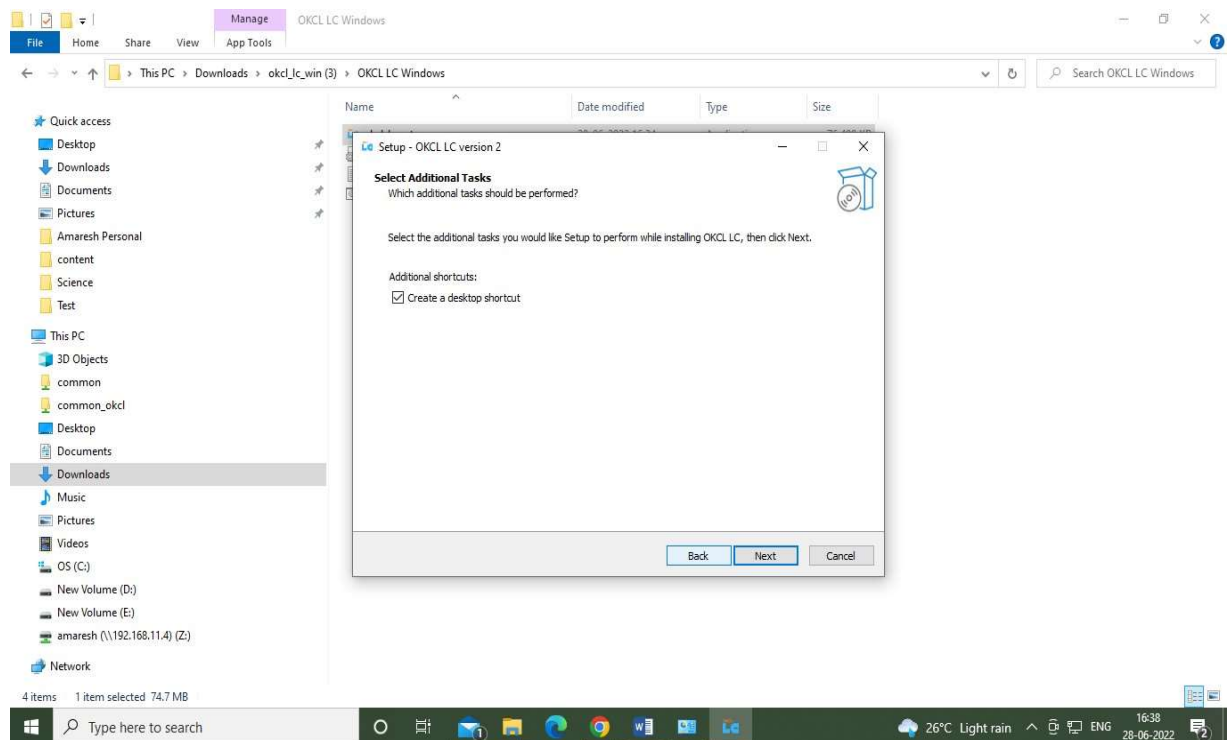
- a) Download the OKCL LC WIN APP from https://lc.okcl.co.in/index.php/home/download_apps
- b) Extract the okcl_lc_win.zip



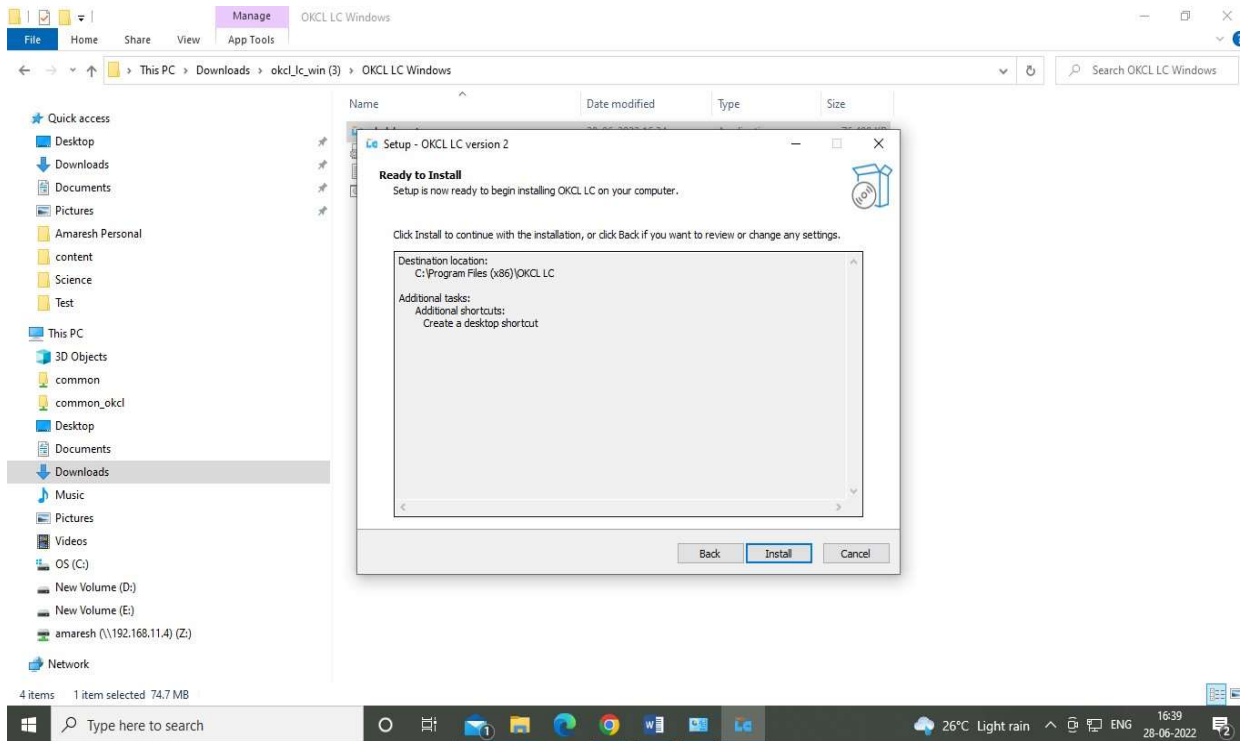
- c) Double click the okcl_lc_setup.exe, to start the installation.
Click Next.



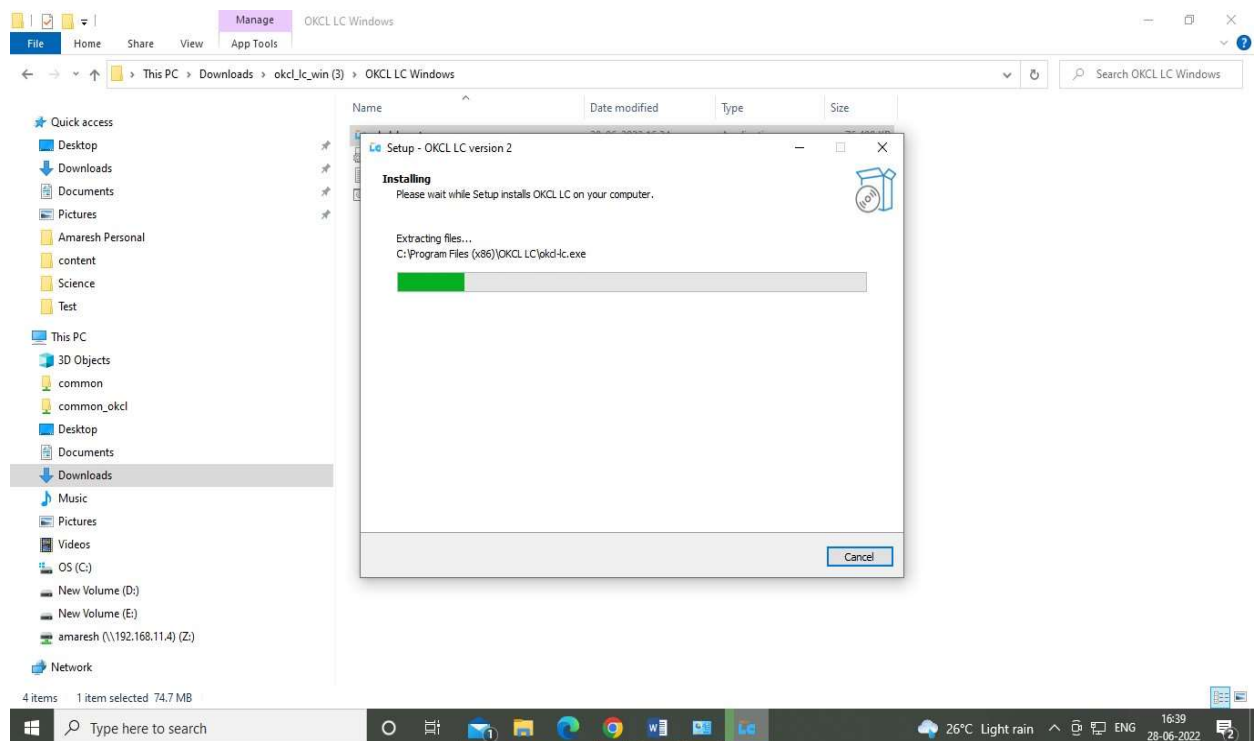
Click Next



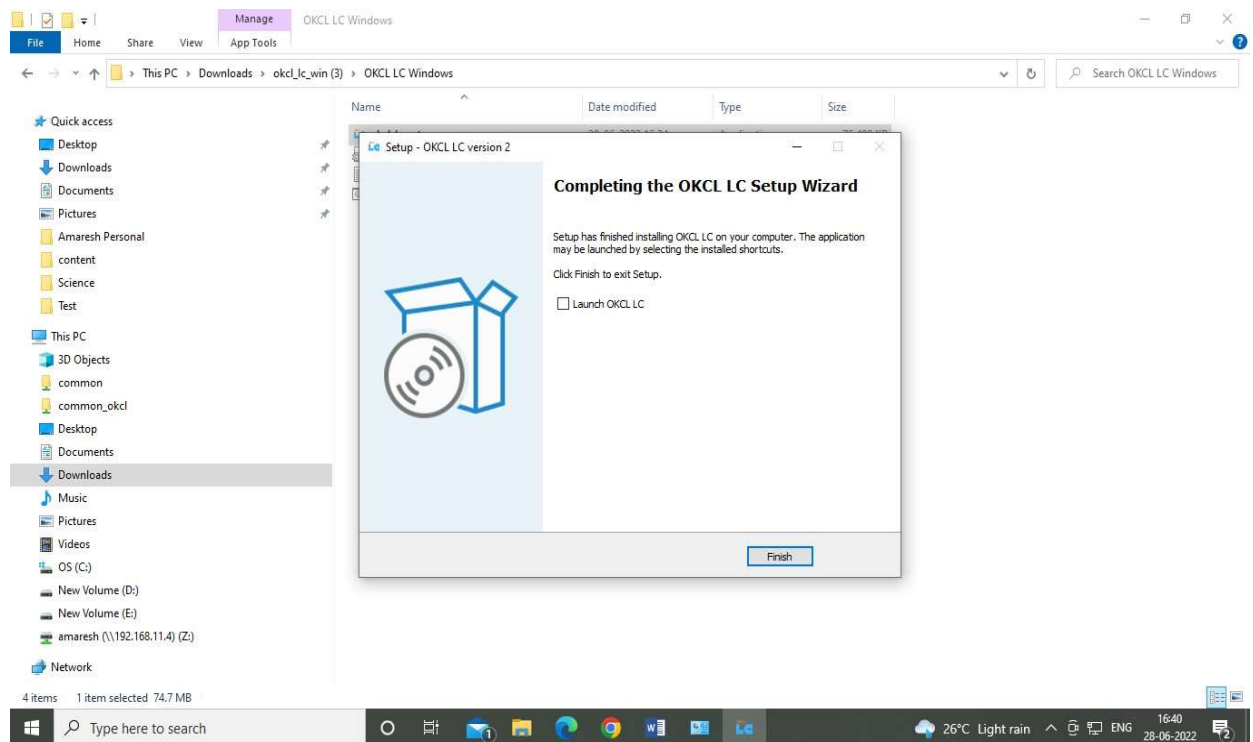
Click Install



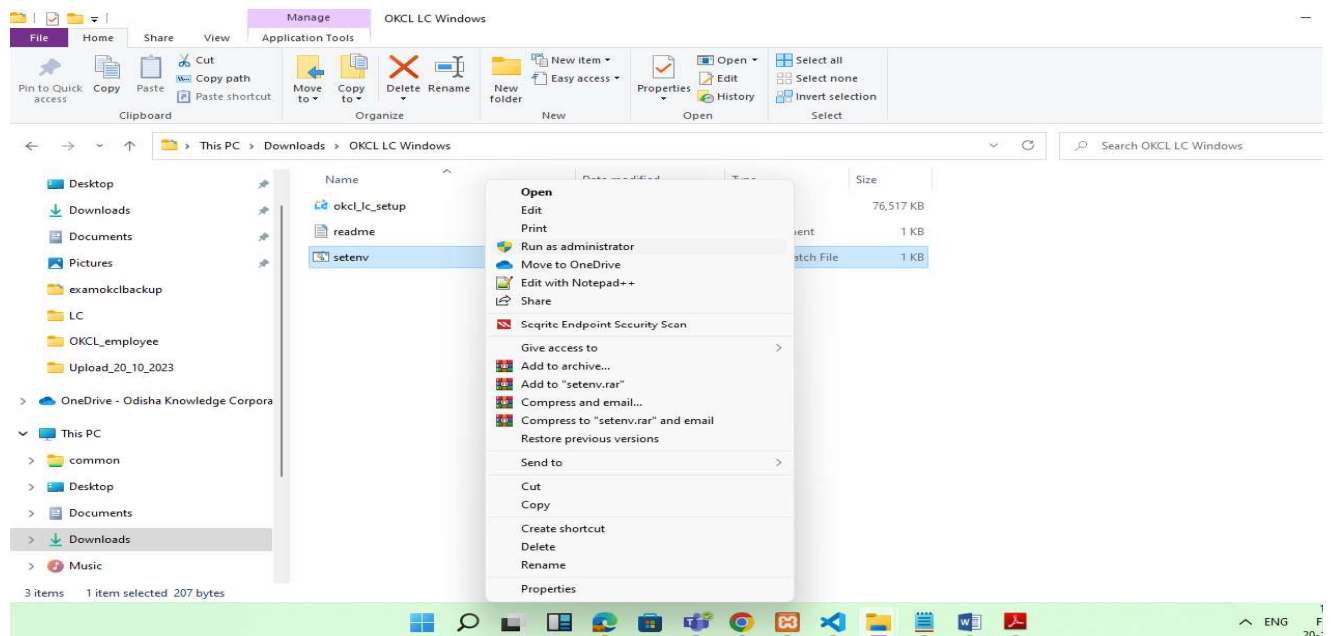
Wait for installation



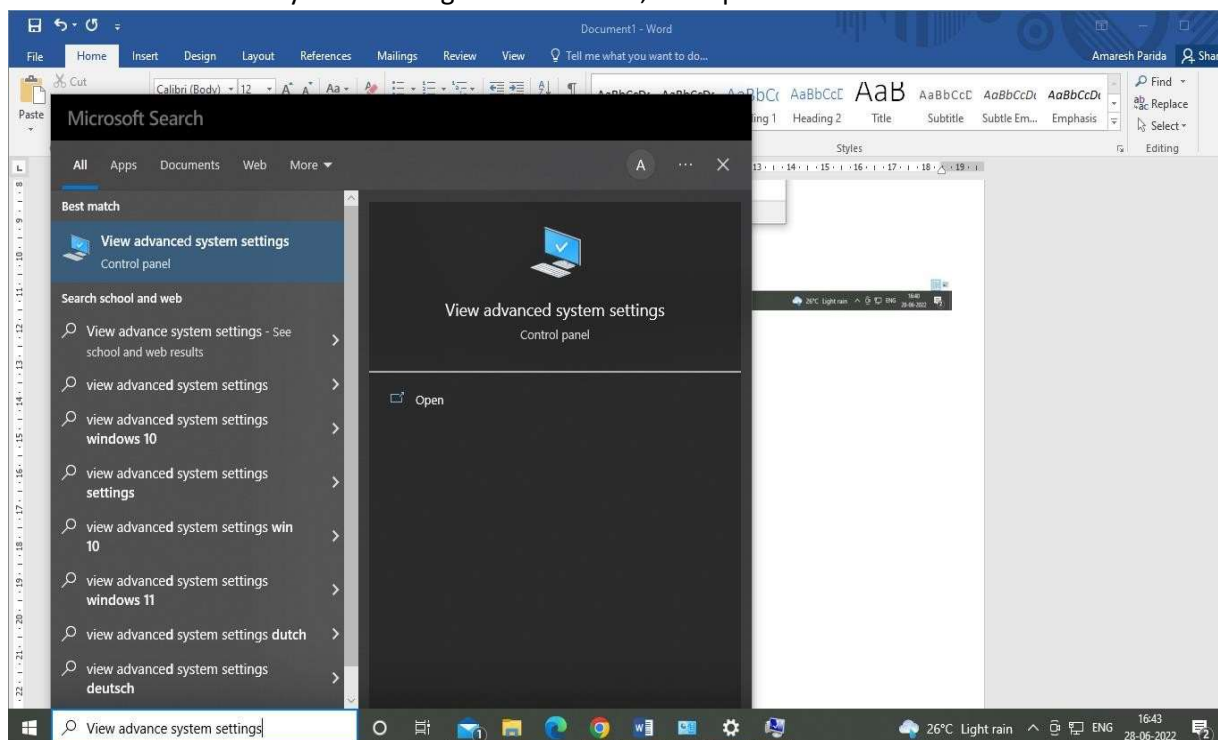
Click Finish



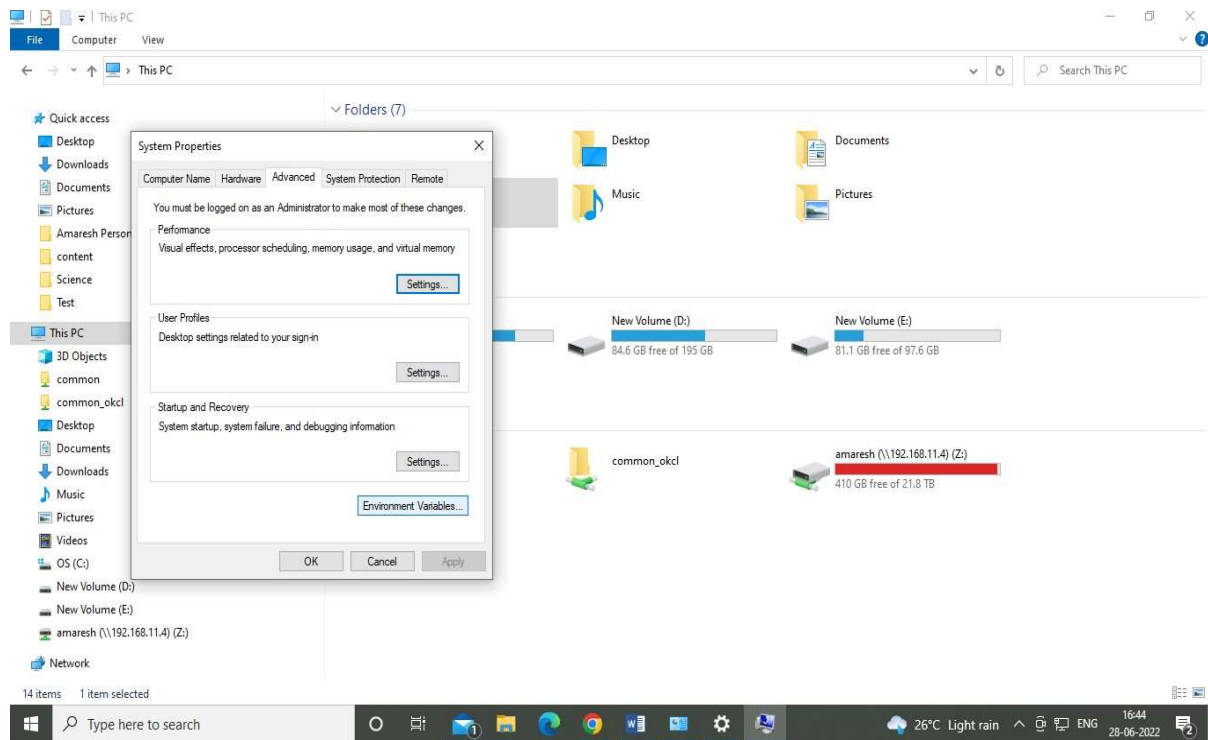
- d) After installation of OKCL LC Setup, go to extract folder of okcl_lc_win.zip. Right click on setenv file, Choose Run As Administrator on it.



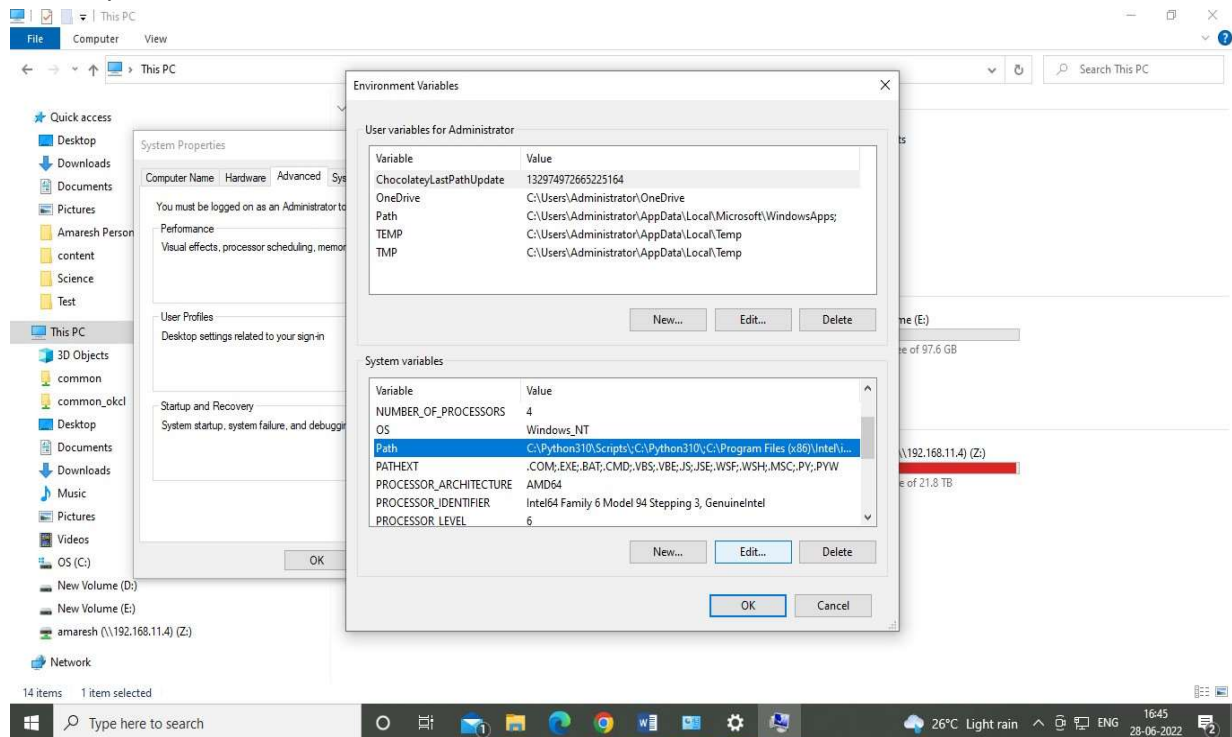
e) Search View Advance System Settings in Start Menu, and open it.



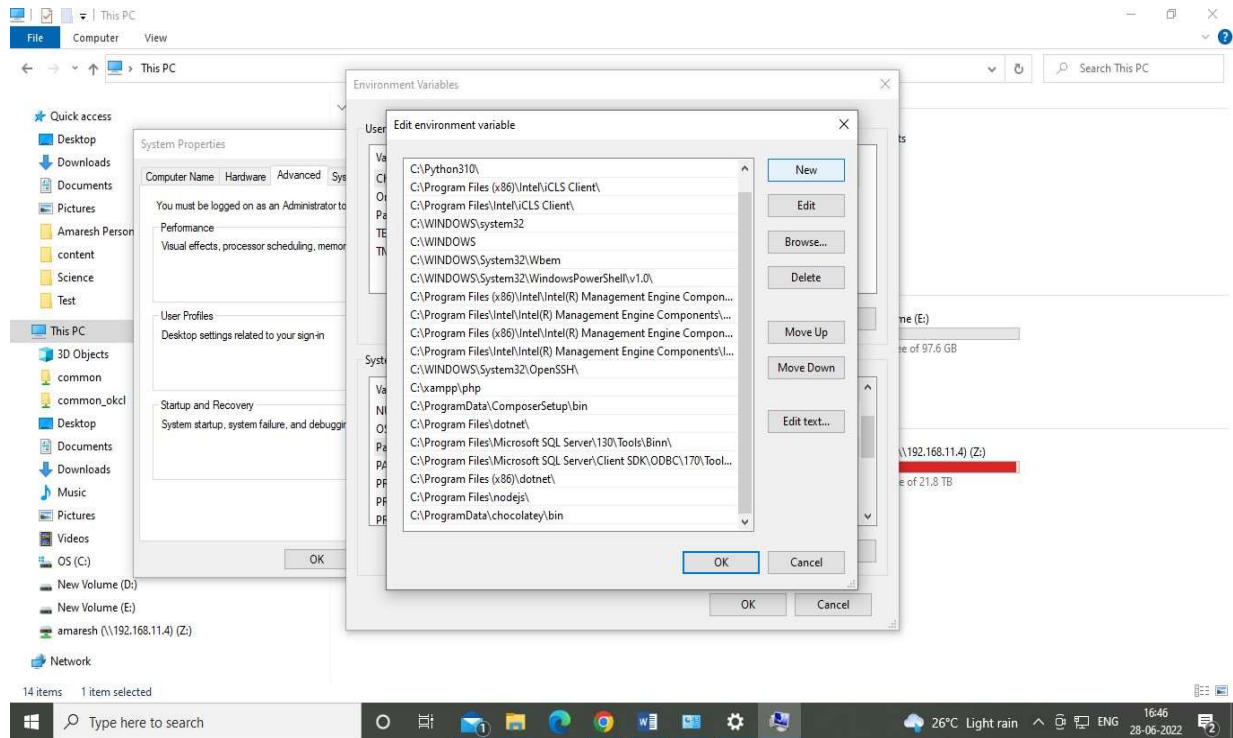
f) Click on Environment Variables



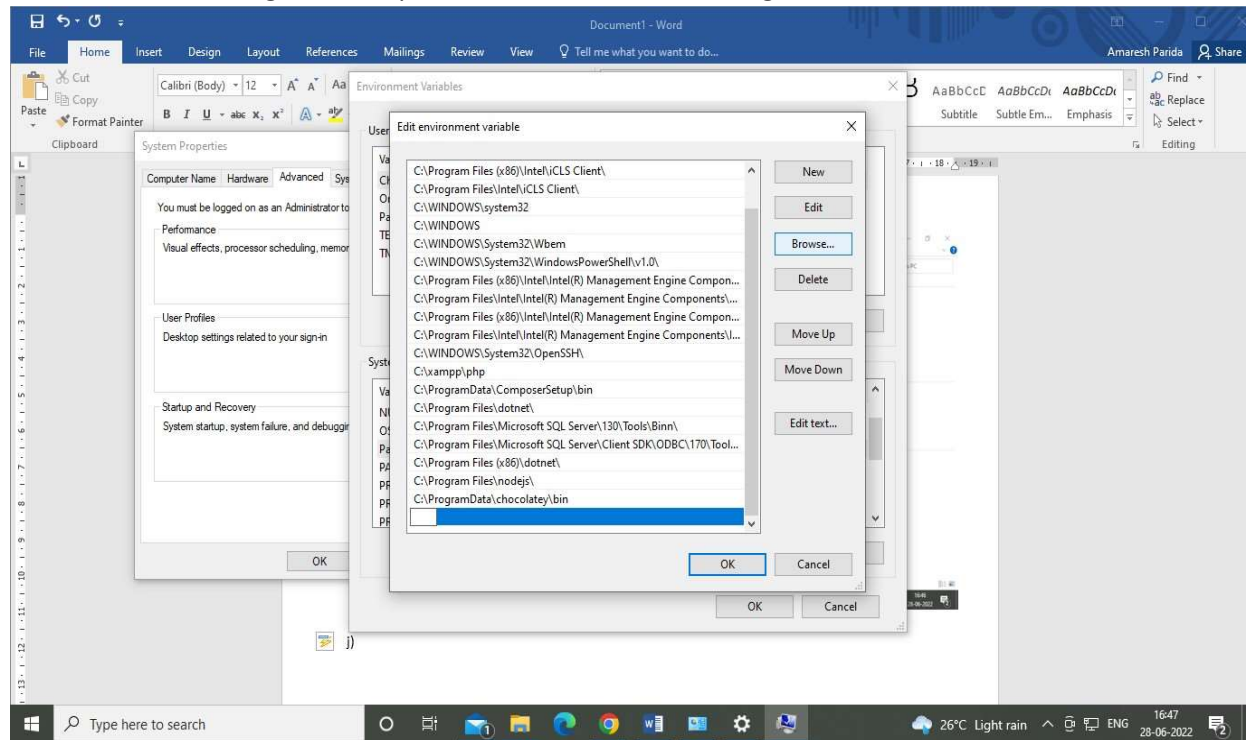
g) Under system variables select Path and click edit



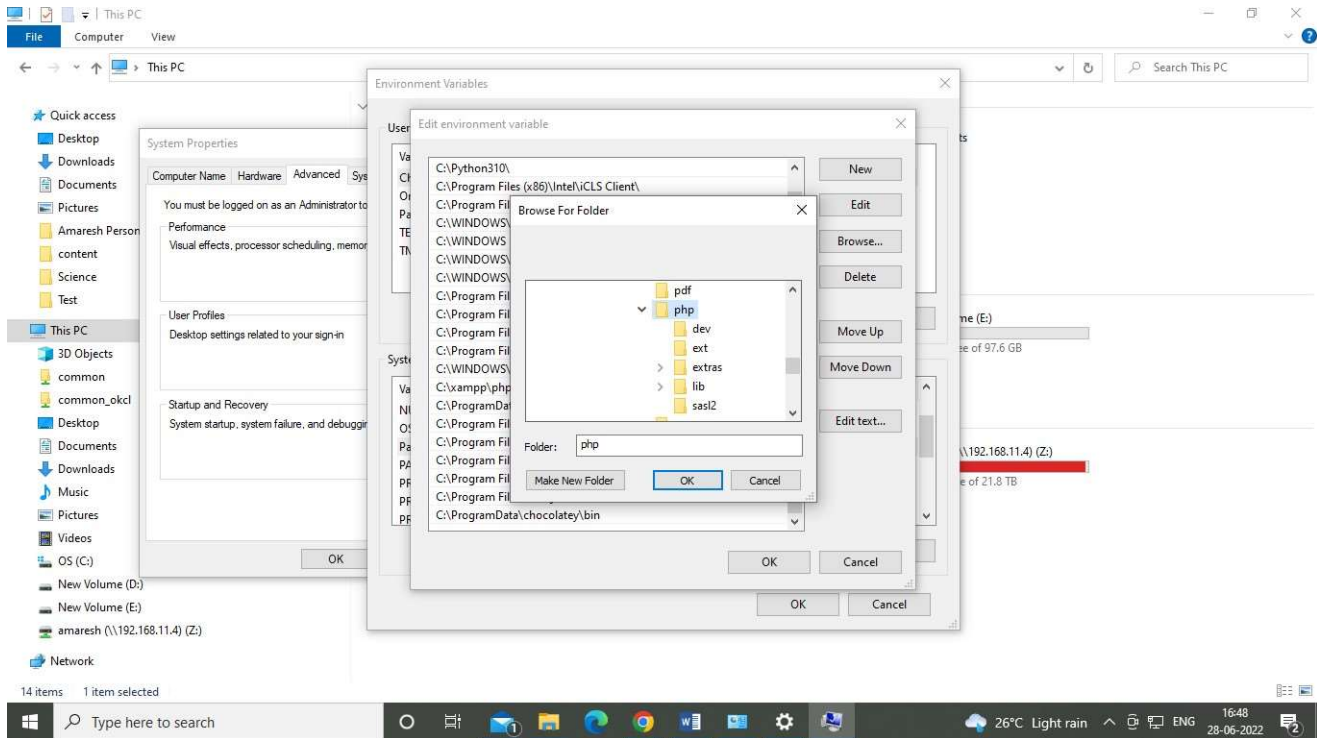
h) Click on NEW on right side on Path edit window



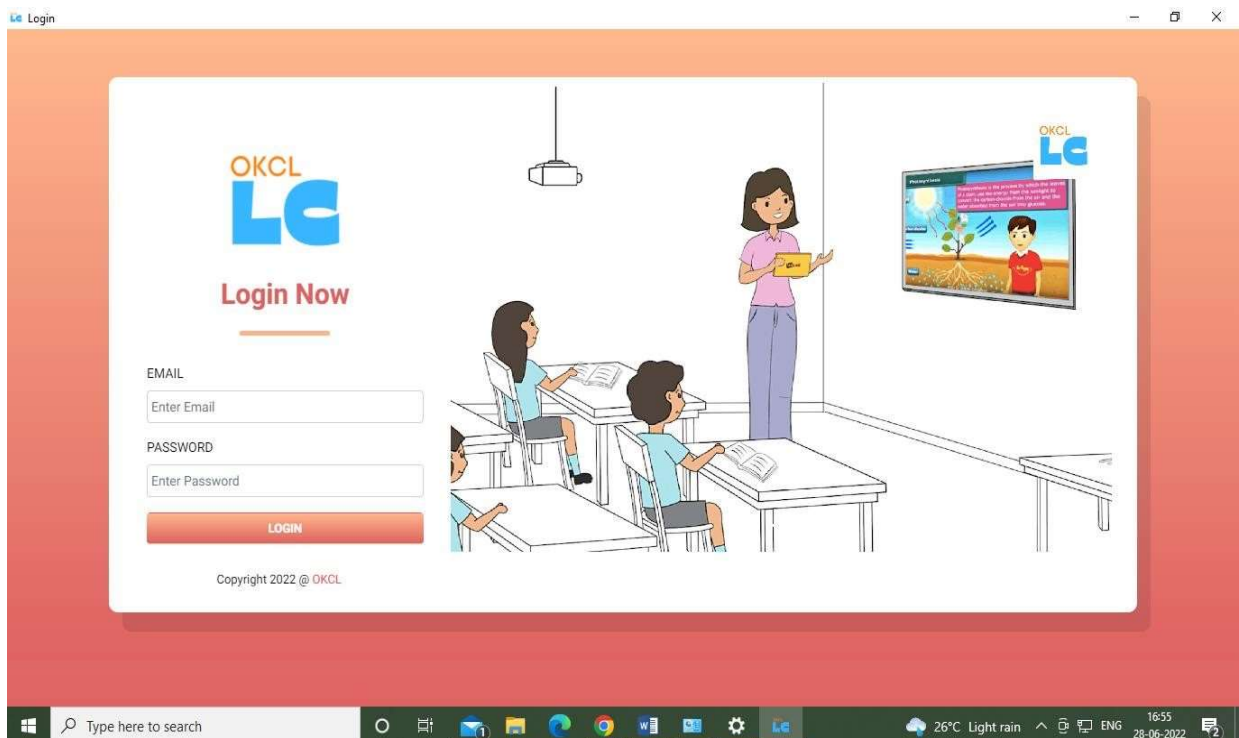
i) Click on Browse on right side of path edit window after clicking on NEW



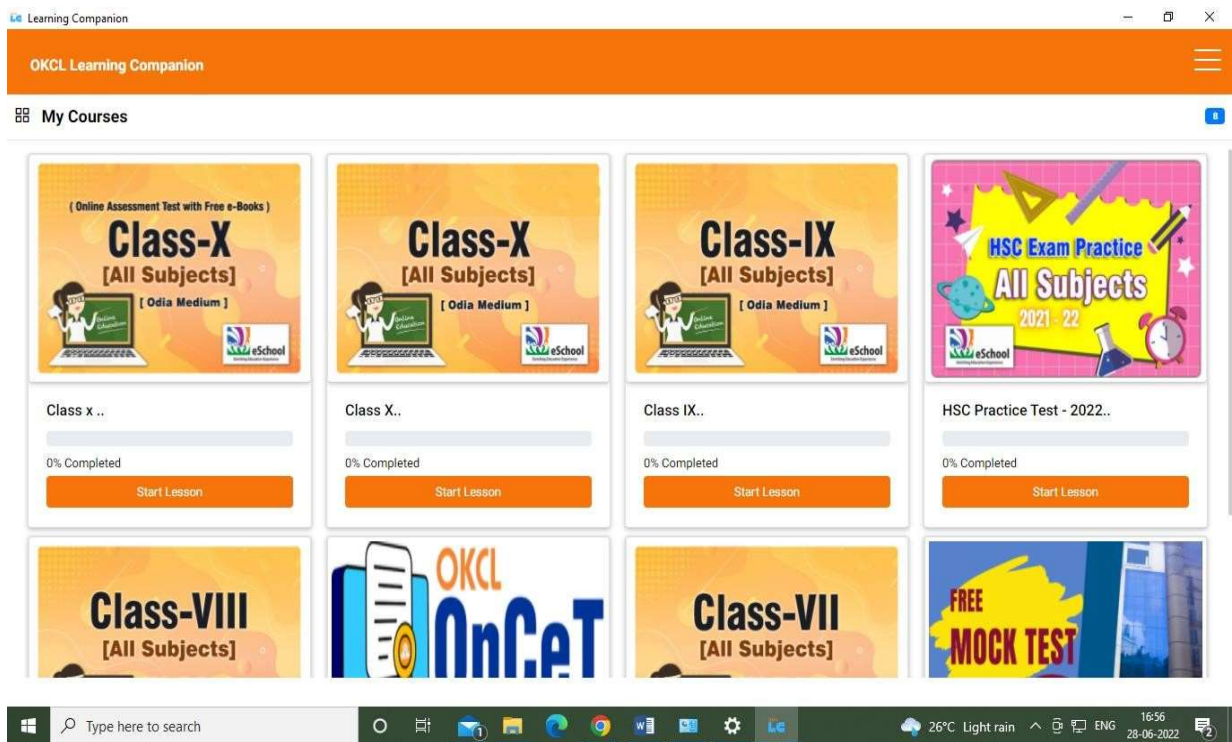
- j) Browse to This PC > C Drive > Program Files(x86) / or where you installed okcl_lc_win > OKCL LC > resources > app. And select php folder and click ok.



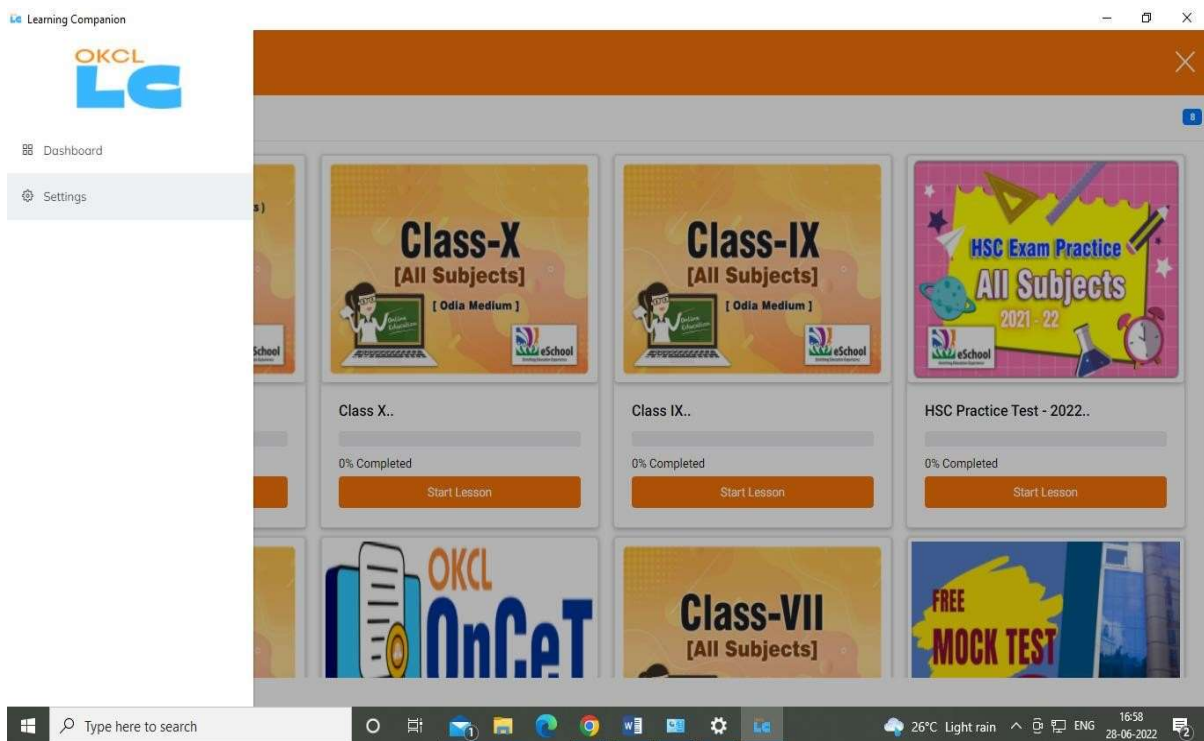
- o) Now open OKCL LC app from start menu.
- p) On LC screen login with your login credentials, provided to you, make sure you have active internet connection.



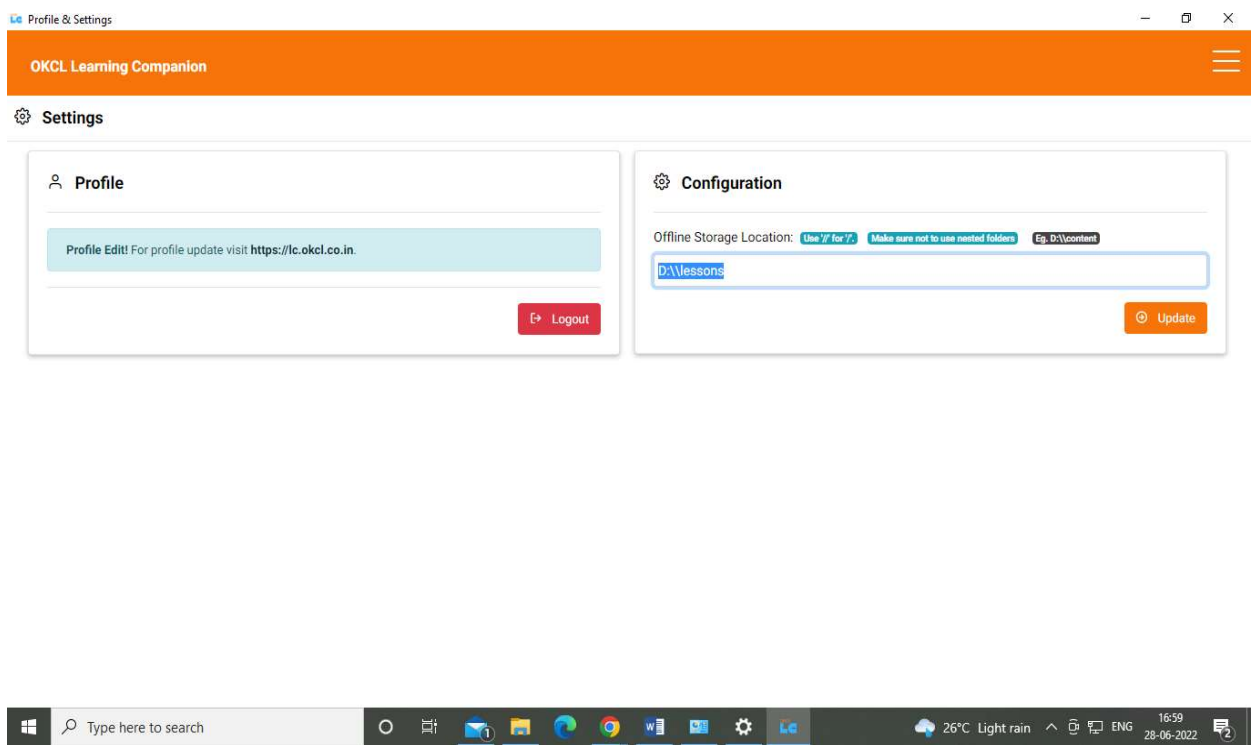
q) LC Dashboard will open



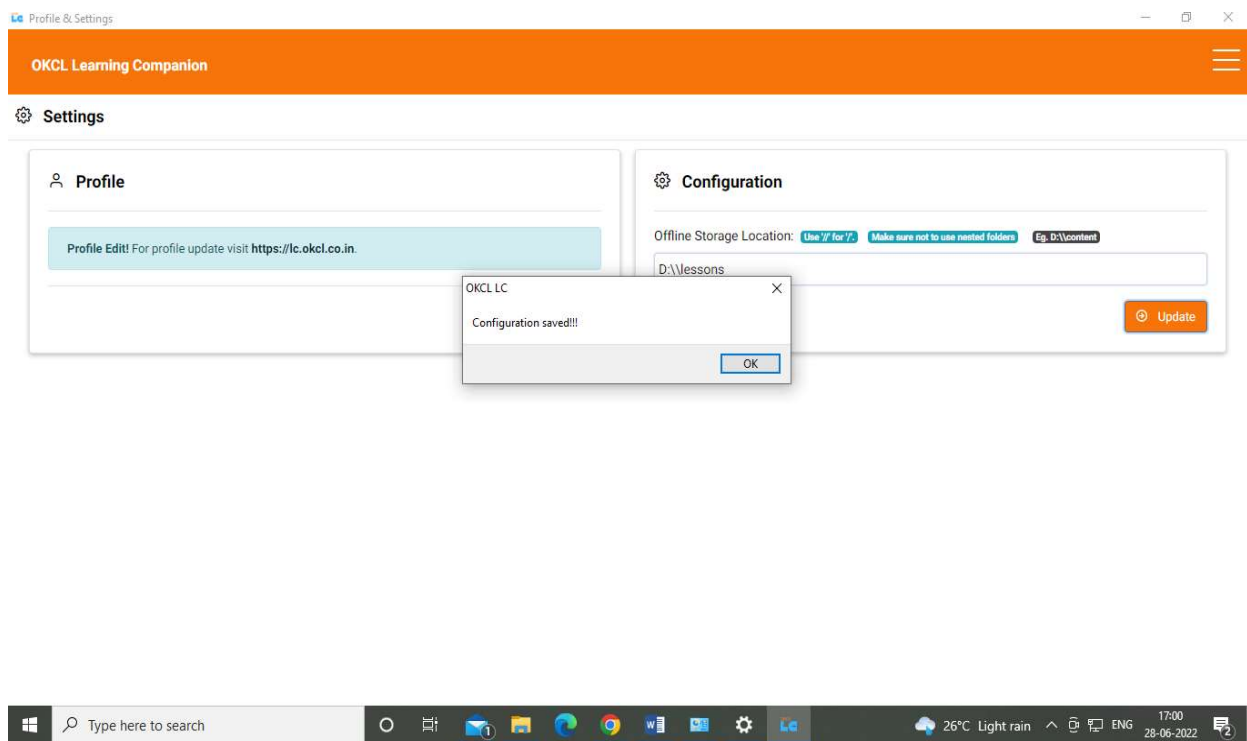
r) Click on right top corner hamburger icon, from left side menu will open, there click on settings.



s) On settings page enter local path in path setting where you have extracted the course (eg. Step a). Make single \ to \\. Example. D:\lessons to D:\\lessons and click on update.



t) Configuration saved message will pop up, click ok.



u) Now restart the app, go to Dashboard > Open your course > from the left panel, play your desired econtent

Mathematics - Algebra

ପ୍ରଥମ ଅଧ୍ୟାୟ ସ୍ୱଳ୍ପ ଶବ୍ଦ ସଂଗ୍ରହ ଓ ପ୍ରଶ୍ନୋତ୍ତର
12 Min

ଦ୍ୱିତୀୟ ଅଧ୍ୟାୟ ସଂଗ୍ରହ ଓ ପ୍ରଶ୍ନୋତ୍ତର
24 Min

ତୃତୀୟ ଅଧ୍ୟାୟ ସଂଗ୍ରହ ଓ ପ୍ରଶ୍ନୋତ୍ତର ଓ ଅଭ୍ୟାସ
12 Min

ଚତୁର୍ଥ ଅଧ୍ୟାୟ ସଂଗ୍ରହ ଓ ପ୍ରଶ୍ନୋତ୍ତର
11 Min

ପଞ୍ଚମ ଅଧ୍ୟାୟ ସଂଗ୍ରହ ଓ ପ୍ରଶ୍ନୋତ୍ତର
9 Min

ଷଷ୍ଠ ଅଧ୍ୟାୟ ସଂଗ୍ରହ ଓ ପ୍ରଶ୍ନୋତ୍ତର
13 Min

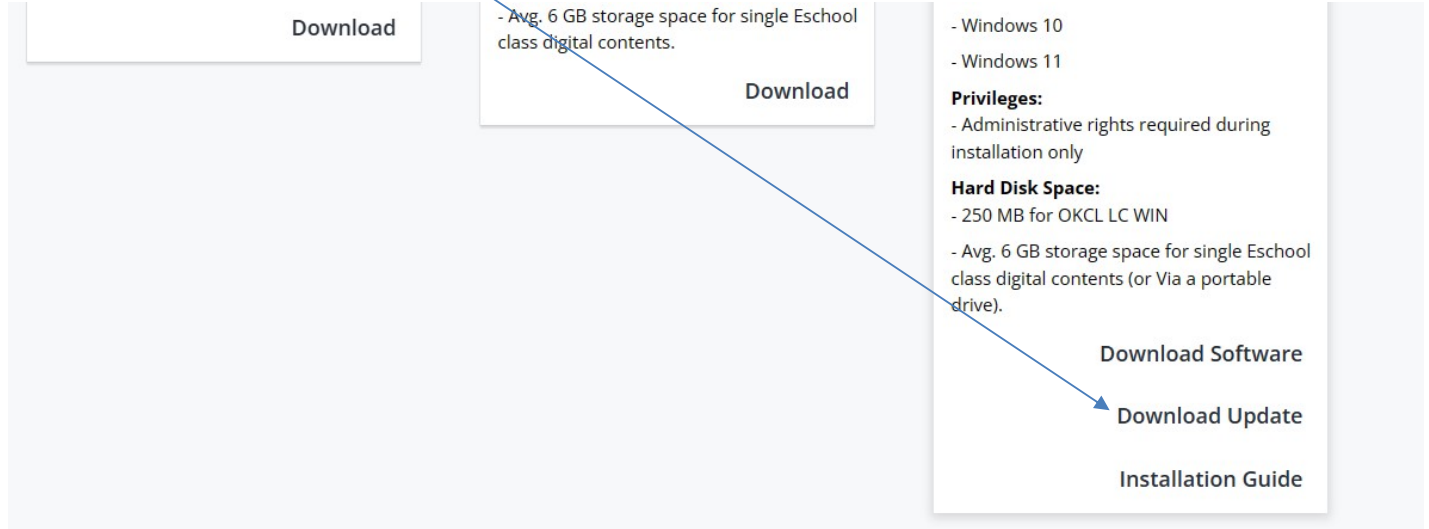
ପ୍ରଥମ ଅଧ୍ୟାୟ ସ୍ୱଳ୍ପ ଶବ୍ଦ ସଂଗ୍ରହ ଓ ପ୍ରଶ୍ନୋତ୍ତର



Procedure for Step – 2 INSTALLATION GUIDE FOR UPDATE

Step-1

Download the update file from the **website** link. https://lc.okcl.co.in/index.php/home/download_apps



Step-2

Unzip the app.zip file

Step-3

Copy unzipped app file. Then paste app file to your LC installed app file location i.e. C:\Program Files (x86)\OKCL LC WIN\resources\. (Replace all the files.)

Step-4

Click on start button → go to OKCL LC WIN → Right click on it → Go to more → click on Run as Administrator. Screenshot is attached in below.

